

# BAYLAN

## WATER METERS

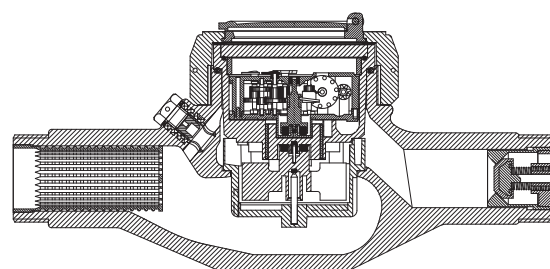
### TK-3P

#### Multi jet Dry type Water Meter



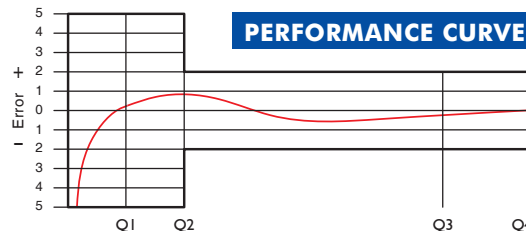
#### GENERAL

- MID Certified
- Multi jet working principle assures a long service time
- Low pressure loss, high sensitivity at initial flow
- 360° rotating lid • Non return valve
- Vacuumed and magnet protected mechanism
- Special glass with high resistance to pressure and impact
- Plastic body with high resistance to pressure and impacts
- Available for optical reading • Almost no maintenance
- Pulse output and AMR reading features are optional
- 3 years of warranty • Suitable for potable water
- Suitable for cold water up to 50°C
- Stainless steel register cup is optional
- Service and spare parts available for 10 years
- Brass or plastic end connection options

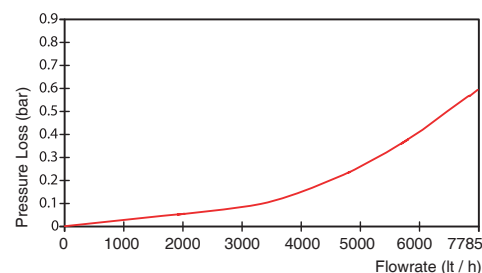


#### PERFORMANCE DATA

Overload Flowrate	Q4	m <sup>3</sup> /h	7,875		
Permanent Flowrate	Q3	m <sup>3</sup> /h	6,300		
Transitional Flowrate	Q2	m <sup>3</sup> /h	0,126	0,1008	0,063
Minimum Flowrate	Q1	m <sup>3</sup> /h	0,0787	0,063	0,0393
Q3/Q1 (MI-001 OIML R49)	-		80	100	160
Mounting on the network	-		Horizontal		
Initial Flow	Qi	l/h	7		
Maximum Working Pressure		bar	16		
Maximum Working Temperature		°C	50		
Pressure Loss		bar	0,6		
Maximum Registration Capacity		m <sup>3</sup> /h	99999		
Smallest Reading Resolution		m <sup>3</sup> /h	0.00005		
Quantity per package			10		

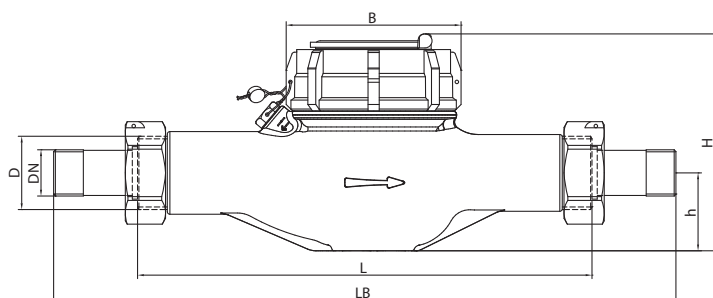


#### PRESSURE LOSS CURVE



#### DIMENSIONS

Nominal diameter	DN	25	mm
Connecting diameter	D	G1 1/4	B
Total overall meter height	H	126	mm
Axis height	h	47	mm
Length	L	260	mm
Width	B	101	mm
Length with connections	LB	380	mm
Unit weight		0,94	kg
Package Weight (without connect)		10,59	kg
Package Weight (with connect)		11,20	kg
Package dimensions		26x52x30,5 cm	



"Due to continuous development of our products, we reserve the right to modify our product design or construction without prior notice."