

BAYLAN

WATER METERS

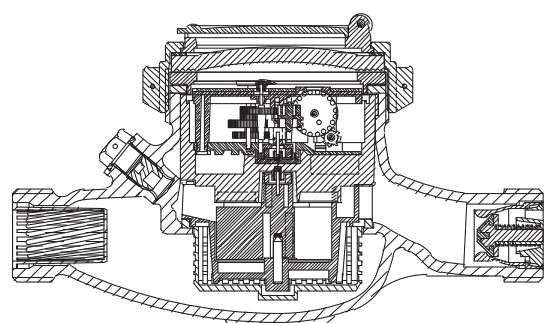
TK-8

Multi jet Dry type Water Meter



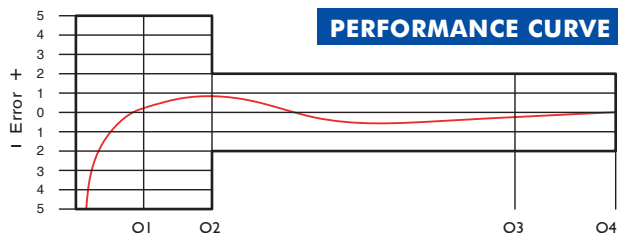
GENERAL

- MID Certified
- Multi jet working principle assures a long service time
- Suitable for potable water
- 360° rotating lid
- Low pressure loss, high sensitivity at initial flow
- Electrostatic painted body made of corrosion resistant brass
- Available for optical reading • Non return valve
- Pulse output and AMR reading features are optional
- 3 years of warranty • Almost no maintenance
- Suitable for cold water up to 50°C
- Service and spare parts available for 10 years

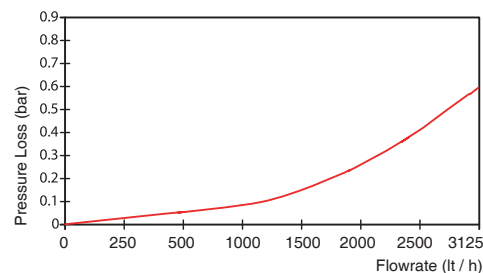


PERFORMANCE DATA

| | | | |
|-------------------------------|-------------------|-------------------|--------------|
| Overload Flowrate | Q4 | m ³ /h | 3,125 |
| Permanent Flowrate | Q3 | m ³ /h | 2,5 |
| Transitional Flowrate | Q2 | m ³ /h | 0,04 |
| Minimum Flowrate | Q1 | m ³ /h | 0,025 |
| Q3/Q1 (MI-001 OIML R49) | - | | 100 |
| Mounting on the network | - | | Horizontal |
| Initial Flow | Qi | l/h | 10 |
| Maximum Working Pressure | bar | | 16 |
| Maximum Working Temperature | °C | | 50 |
| Pressure Loss | bar | | 0,6 |
| Maximum Registration Capacity | m ³ | | 99999,999 |
| Smallest Reading Resolution | m ³ /h | | 0.00005 |
| Quantity per package | - | | 10 |
| Package dimensions | cm | | 24,5x46,5x22 |

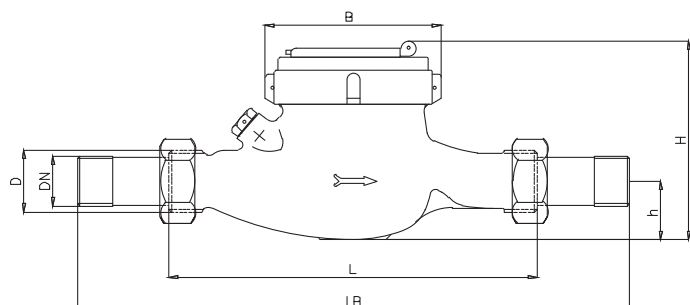


PRESSURE LOSS CURVE



DIMENSIONS

| | | | |
|----------------------------------|----|-------|----|
| Nominal diameter | DN | 20 | mm |
| Connecting diameter | D | G 1 | B |
| Total overall meter height | H | 119 | mm |
| Axis height | h | 32,5 | mm |
| Length | L | 190 | mm |
| Width | B | 93 | mm |
| Length with connections | LB | 270 | mm |
| Unit weight | | 1,33 | kg |
| Package Weight (without connect) | | 14,06 | kg |
| Package Weight (with connect) | | 15,86 | kg |



"Due to continuous development of our products, we reserve the right to modify our product design or construction without prior notice."