

BAYLAN

WATER METERS

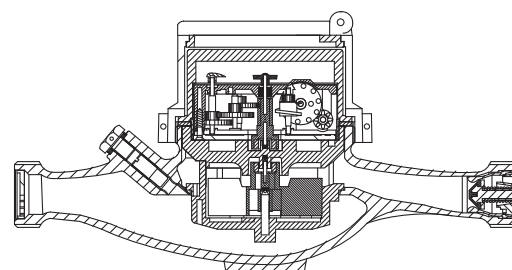
TK-12

Multi jet Dry type Water Meter



GENERAL

- MID Certified
- Multi jet working principle assures a long service time
- Low pressure loss, high sensitivity at initial flow
- Suitable for potable water
- 360° rotating lid
- Available for optical reading
- 3 years of warranty • Non return valve
- Suitable for cold water up to 50°C
- Electrostatic painted body made of corrosion resistant brass
- Almost no maintenance
- Service and spare parts available for 10 years

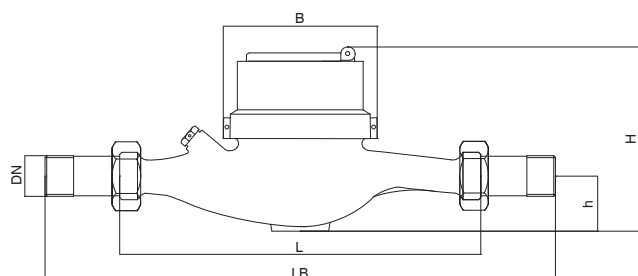
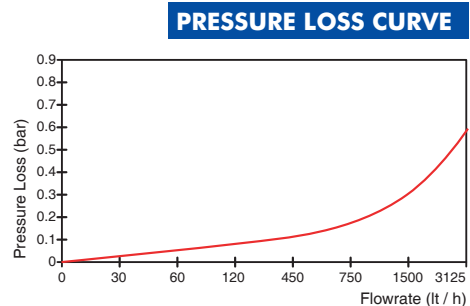
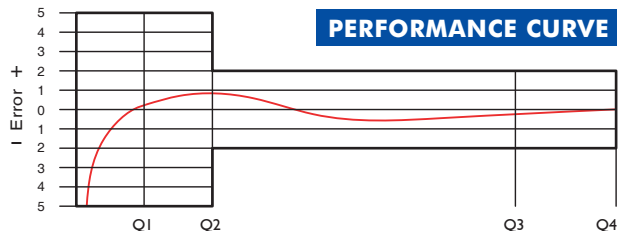


PERFORMANCE DATA

Overload Flowrate	Q4	m ³ /h	3,125		
Permanent Flowrate	Q3	m ³ /h	2,5		
Transitional Flowrate	Q2	m ³ /h	0,050	0,040	0,025
Minimum Flowrate	Q1	m ³ /h	0,0312	0,025	0,0156
Q3/Q1 (MI-001 OIML R49)	-		80	100	160
Mounting on the network	-		Horizontal		
Initial Flow	Qi	l/h	7		
Maximum Working Pressure		bar	16		
Maximum Working Temperature		°C	50		
Pressure Loss		bar	0,63		
Maximum Registration Capacity		m ³	9999 / 99999		
Smallest Reading Resolution		m ³ /h	0.00005		
Quantity per package			10		
Package dimensions		cm	24x47x23		

DIMENSIONS

Nominal diameter	DN	15	20	mm
Connecting diameter	D	G 3/4	G 1	B
Total overall meter height	H	93	93	mm
Axis height	h	28	28	mm
Width	B	80	80	mm
Length	L	165/190	165/190	mm
Length with connections	LB	245/270	245/270	mm
Unit weight		0,91	0,85	kg
Package Weight (without connect)		9,90	9,30	kg
Package Weight (with connect)		11,50	11,20	kg



"Due to continuous development of our products, we reserve the right to modify our product design or construction without prior notice."