

# BAYLAN

## WATER METERS

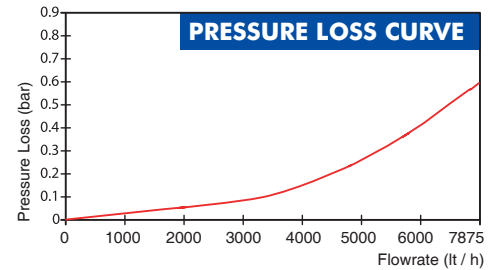
# TK-3C

## Multi jet Dry type Water Meter



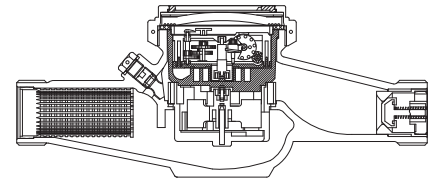
### GENERAL

- MID Certified • Impeller chamber strainer (Optional)
- Multi jet working principle assures a long service time
- Suitable for potable water
- 360° rotating lid
- Low pressure loss, high sensitivity at initial flow
- Electrostatic painted body made of corrosion resistant brass
- Available for optical reading • Non return valve
- Pulse output and AMR reading features are optional
- 3 years of warranty • Almost no maintenance
- Stainless steel register cup is optional
- Suitable for cold water up to 50°C
- Service and spare parts available for 10 years



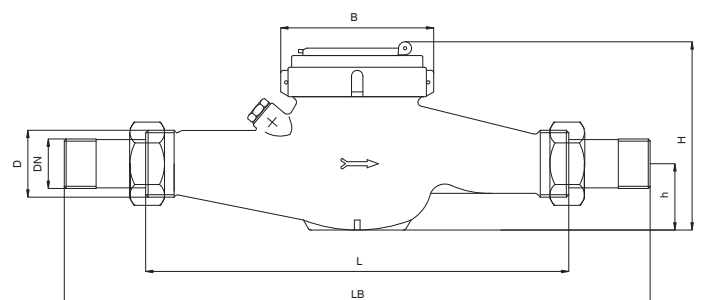
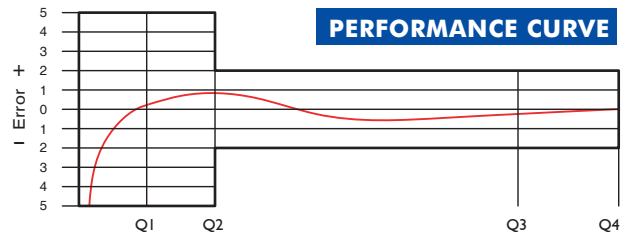
### PERFORMANCE DATA

Overload Flowrate	Q4	m <sup>3</sup> /h	7.875				
Permanent Flowrate	Q3	m <sup>3</sup> /h	6.3				
Transitional Flowrate	Q2	m <sup>3</sup> /h	0.1008	0.08064	0.063	0.0504	0.04032
Minimum Flowrate	Q1	m <sup>3</sup> /h	0.063	0.0504	0.0393	0.0315	0.0252
Q3/Q1 (MI-001 OIML R49)			100	125	160	200	250
Mounting on the network			H				
Maximum Registration Capacity			99999 / 99999,99 / 99999,999				
Initial Flowrate	Qi	l/h	7				
Maximum Working Pressure		bar	16				
Maximum Working Temperature		°C	50				
Pressure Loss		bar	0.6				
Smallest Reading Resolution		m <sup>3</sup>	0.00005				
Class			Class 1 / Class 2				



### DIMENSIONS

Nominal diameter	DN	25	mm
Connecting diameter	D	G1 1/4	B
Total overall meter height	H	125	mm
Axis height	h	43.5	mm
Width	B	92.2	mm
Length	L	260	mm
Length with connections	LB	380	mm
Unit weight		1.87	kg
Package Weight (without connect)		19.70	kg
Package Weight (with connect)		24.10	kg
Quantity per package		10	pcs
Package dimensions		26x52x30	cm



"Due to continuous development of our products, we reserve the right to modify our product design or construction without prior notice."