

# BAYLAN

## WATER METERS

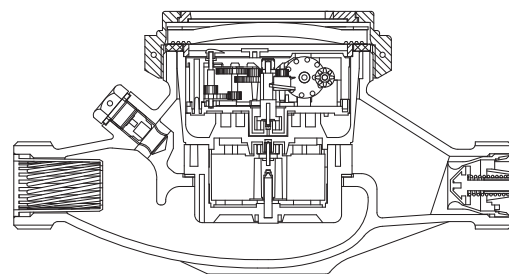
### TK-2

## Multi jet Dry type Water Meter



### GENERAL

- MID Certified
- Multi jet working principle assures a long service time
- Suitable for potable water
- Low pressure loss, high sensitivity at initial flow
- Special glass with high resistance to pressure and impact
- Electrostatic painted body made of corrosion resistant brass
- Available for optical reading • 360° rotating lid
- Pulse output and AMR reading features are optional
- 3 years of warranty • Non return valve
- Suitable for cold water up to 50°C
- Almost no maintenance • Vacuumed mechanism
- Stainless steel register cup is optional
- Service and spare parts available for 10 years



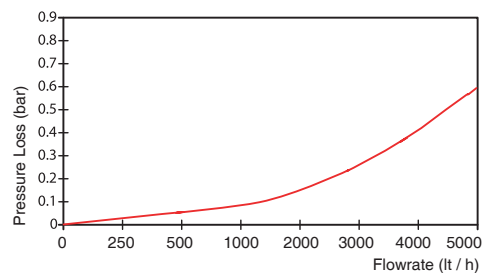
### PERFORMANCE DATA

Permanent Flowrate	Q3 ( m <sup>3</sup> / h ) :	4
Overload Flowrate	Q4 ( m <sup>3</sup> / h ) :	5
Transitional Flowrate	Q2 ( m <sup>3</sup> / h ) :	0.064   0.0512   0.04   0.032
Minimum Flowrate	Q1 ( m <sup>3</sup> / h ) :	0.04   0.032   0.025   0.02
Q3/Q1 (MI-001 OIML R49)	:	100   125   160   200
Maximum Registration Capacity	( m <sup>3</sup> ) :	9999 / 99999 / 99999,99 / 99999,999
Initial Flowrate	Qi ( l/h ) :	6
Maximum Working Pressure	( bar ) :	16
Maximum Working Temperature	( °C ) :	50
Pressure Loss (Q3)	( bar ) :	0.6
Smallest Reading Resolution	( m <sup>3</sup> ) :	0.00005
Class	:	Class 1 / Class 2
Mounting on the network	:	Horizontal
Unit weight	( kg ) :	1.33
Package Weight (without connections)	( kg ) :	14.20
Package Weight (with connections)	( kg ) :	16.10
Quantity per package	:	10
Package dimensions	( cm ) :	25x46.5x22

### DIMENSIONS

Nominal diameter	DN	20	mm
Connecting diameter	D	G 1	B
Total overall meter height	H	110	mm
Axis height	h	33	mm
Length	L	190	mm
Width	B	92	mm
Length with connections	LB	270	mm

### PRESSURE LOSS CURVE



### PERFORMANCE CURVE

