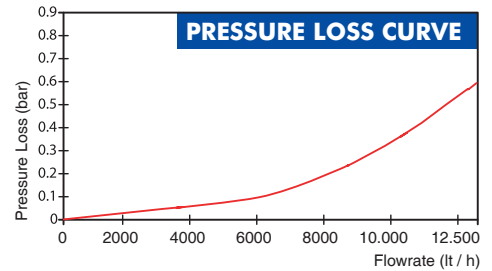
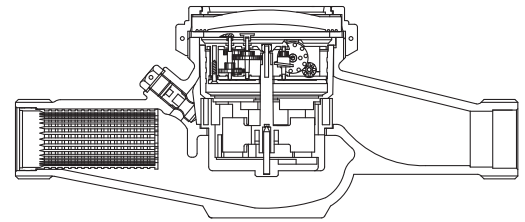


# BAYLAN

## WATER METERS

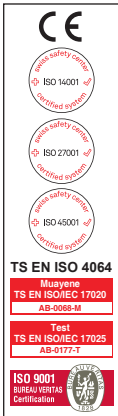
### TY-26

## Multi jet Wet type Water Meter



### GENERAL

- MID Certified
- Multi jet working principle assures a long service time
- Available for optical reading
- Electrostatic painted body made of corrosion resistant brass
- Pulse output optional
- Suitable for potable water
- Non return valve
- Low pressure loss, high sensitivity at initial flow
- Special glass with high resistance to pressure and impact
- 360° rotating lid • Double filter
- Suitable for cold water up to 50°C
- Almost no maintenance • 3 years of warranty
- Service and spare parts available for 10 years

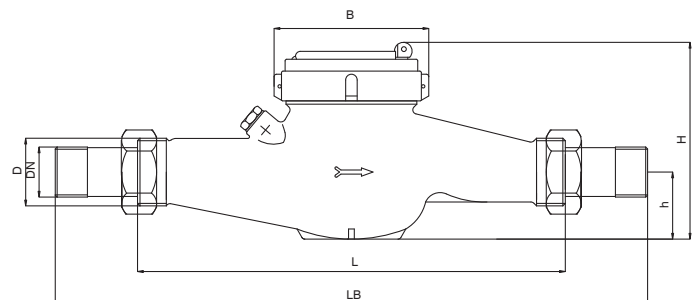
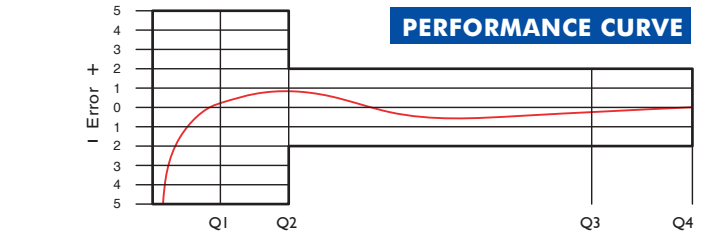


### PERFORMANCE DATA

Overload Flowrate	Q4	m <sup>3</sup> /h	12,5					
Permanent Flowrate	Q3	m <sup>3</sup> /h	10					
Transitional Flowrate	Q2	m <sup>3</sup> /h	0,100	0,08	0,064	0,64	0,40	0,2
Minimum Flowrate	Q1	m <sup>3</sup> /h	0,0625	0,05	0,04	0,4	0,25	0,125
Q3/Q1 (MI-001 OIML R49)	-		160	200	250	25	40	80
Mounting on the network	-		H			V		
Maximum Registration Capacity	m <sup>3</sup>		9999 / 99999 / 99999,99 / 99999,999					
Maximum Working Pressure	bar		16					
Maximum Working Temperature	°C		50					
Pressure Loss	bar		0,6					
Initial Flow	Qi	l/h	15					
Smallest Reading Resolution	m <sup>3</sup>		0,00005					
Accuracy Class	-		Class 1/Class 2					
Unit weight	kg		2,28					
Package Weight (without connect)	kg		23,99					
Package Weight (with connect)	kg		30,39					
Quantity per package	-		10					
Package dimensions	cm		26,5x52x30,5					

### DIMENSIONS

Nominal diameter	DN	32	mm
Connecting diameter	D	G1 1/2	B
Total overall meter height	H	122	mm
Axis height	h	47	mm
Width	B	95	mm
Length	L	260	mm
Length with connections	LB	385	mm



"Due to continuous development of our products, we reserve the right to modify our product design or construction without prior notice."