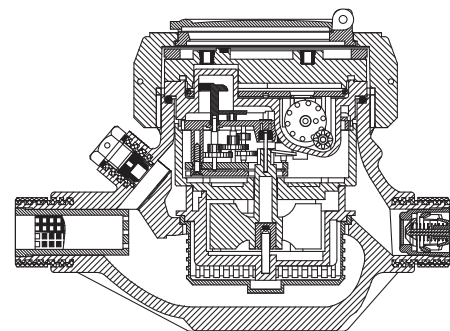


# BAYLAN

## WATER METERS

### SD-1P

## Multi jet Semi-Dry type Water Meter



#### GENERAL

- MID Certified
- Multi jet working principle assures a long service time
- Suitable for potable water
- Low pressure loss, high sensitivity at initial flow
- Propylene glycol protected register
- Special glass with high resistance to pressure and impact
- Plastic body with high resistance to pressure and impacts
- Double filter • Non return valve
- Available for optical reading
- Pulse output and AMR reading features are optional
- 3 years of warranty • Almost no maintenance
- Suitable for cold water up to 50°C
- Service and spare parts available for 10 years
- Brass or plastic end connection options



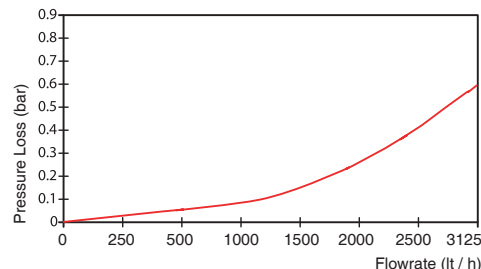
#### PERFORMANCE DATA

Overload Flowrate	Q4	m <sup>3</sup> /h	3,125		
Permanent Flowrate	Q3	m <sup>3</sup> /h	2,5		
Transitional Flowrate	Q2	m <sup>3</sup> /h	0,025	0,02	0,016
Minimum Flowrate	Q1	m <sup>3</sup> /h	0,0156	0,0125	0,01
Q3/Q1 (MI-001 OIML R49)	-		160	200	250
Mounting on the network	-		Horizontal		
Maximum Registration Cap.	m <sup>3</sup>		9999 / 99999 / 99999,99 / 99999,999		
Initial Flow	Qi	l/h	5		
Maximum Working Pressure	bar		16		
Maximum Working Temp.	°C		50		
Pressure Loss	bar		0,6		
Smallest Reading Resolution	m <sup>3</sup> /h		0,00005		
Class	-		Class 1 / Class 2		

#### DIMENSIONS

Nominal diameter	DN	15	mm
Connecting diameter	D	G 3/4	B
Total overall meter height	H	118	mm
Axis height	h	38,5	mm
Length	L	165	mm
Width	B	101	mm
Length with connections	LB	245	mm
Unit weight		0,72	kg
Package Weight (without connect)		8,25	kg
Package Weight (with connect)		9,65	kg
Quantity per package		10	pcs
Package dimensions		27x48,5x20	cm

#### PRESSURE LOSS CURVE



#### PERFORMANCE CURVE

