

BAYLAN

WATER METERS

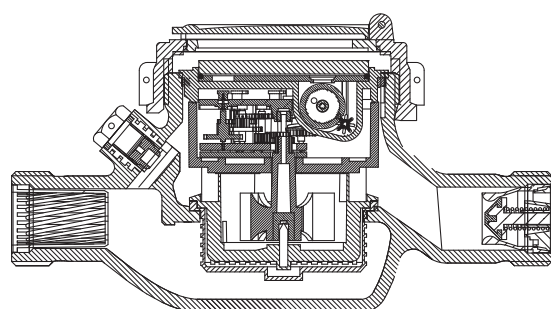
SD-2P

Multi jet Semi-Dry type Water Meter



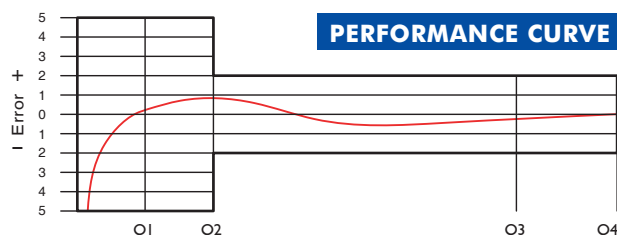
GENERAL

- MID Certified
- Multi jet working principle assures a long service time
- Suitable for potable water
- Low pressure loss, high sensitivity at initial flow
- Propylene glycol protected register
- Special glass with high resistance to pressure and impact
- Plastic body with high resistance to pressure and impacts
- Available for optical reading
- Pulse output and AMR reading features are optional
- Double filter • Non return valve
- 3 years of warranty • Almost no maintenance
- Suitable for cold water up to 50°C
- Service and spare parts available for 10 years
- Brass or plastic end connection options



PERFORMANCE DATA

Overload Flowrate	Q4	m ³ /h	3,125	5
Permanent Flowrate	Q3	m ³ /h	2,5	4
Transitional Flowrate	Q2	m ³ /h	0,025	0,032
Minimum Flowrate	Q1	m ³ /h	0,0156	0,020
Q3/Q1 (MI-001 OIML R49)	-		160	200
Mounting on the network	-		Horizontal	
Initial Flow	Qi	l/h	5	
Maximum Working Pressure		bar	16	
Maximum Working Temp.		°C	50	
Pressure Loss		bar	0,6	
Maximum Registration Cap.		m ³ /h	99999	
Smallest Reading Resolution		m ³ /h	0,00005	



DIMENSIONS

Nominal diameter	DN	20	mm
Connecting diameter	D	G 1	B
Total overall meter height	H	117	mm
Axis height	h	37.5	mm
Length	L	190	mm
Width	B	101	mm
Length with connections	LB	270	mm
Unit weight		0,79	kg
Package Weight (without connect)		8,83	kg
Package Weight (with connect)		10,68	kg
Quantity per package		10	pcs
Package dimensions		27x52x22	cm

PRESSURE LOSS CURVE

