

# BAYLAN

## WATER METERS

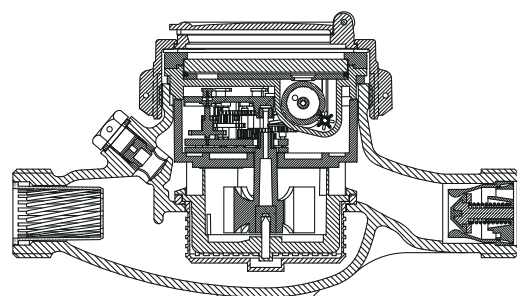
### SD-2

## Multi jet Semi-Dry type Water Meter



#### GENERAL

- MID Certified
- Multi jet working principle assures a long service time
- Electrostatic painted body made of corrosion resistant brass
- Suitable for potable water
- Low pressure loss, high sensitivity at initial flow
- Propylene glycol protected register
- Special glass with high resistance to pressure and impact
- Double filter • Non return valve
- Available for optical reading
- Pulse output and AMR reading features are optional
- 3 years of warranty • Almost no maintenance
- Suitable for cold water up to 50°C
- Service and spare parts available for 10 years



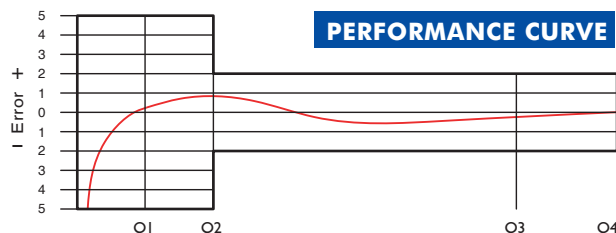
#### PERFORMANCE DATA

Overload Flowrate	Q4	m³/h	3,125	5
Permanent Flowrate	Q3	m³/h	2,5	4
Transitional Flowrate	Q2	m³/h	0,025	0,032
Minimum Flowrate	Q1	m³/h	0,0156	0,020
Q3/Q1 (MI-001 OIML R49)	-		160	200
Mounting on the network	-		Horizontal	
Initial Flow	Qi	l/h	5	
Maximum Working Pressure		bar	16	
Maximum Working Temp.		°C	50	
Pressure Loss		bar	0,6	
Maximum Registration Cap.		m³/h	99999	
Smallest Reading Resolution		m³/h	0,00005	

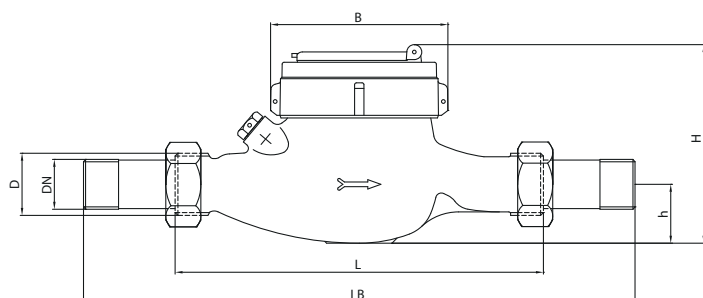
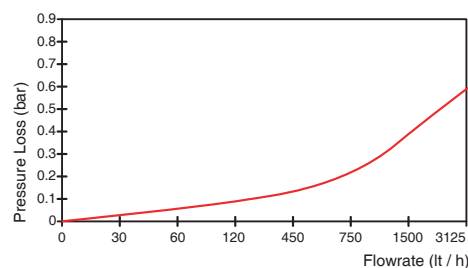
#### DIMENSIONS

Nominal diameter	DN	20	mm
Connecting diameter	D	G 1	B
Total overall meter height	H	107	mm
Axis height	h	33	mm
Length	L	190	mm
Width	B	93	mm
Length with connections	LB	270	mm
Unit weight		1,23	kg
Package Weight (without connect)		13,09	kg
Package Weight (with connect)		15,00	kg
Quantity per package		10	pcs
Package dimensions		24,5x46x22	cm

#### PERFORMANCE CURVE



#### PRESSURE LOSS CURVE



"Due to continuous development of our products, we reserve the right to modify our product design or construction without prior notice."