

# Compact Capsule Sensing Pr. Gauges

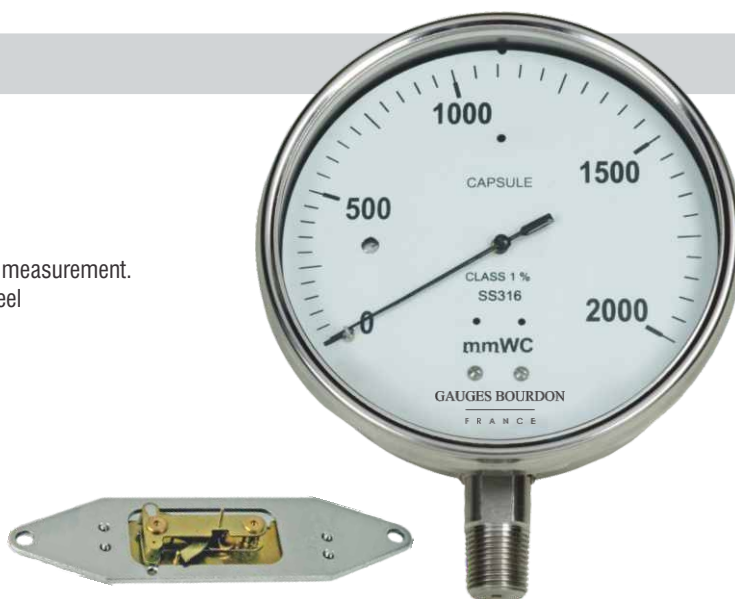
GAUGES BOURDON

FRANCE

Model : **CCPG** (Normal Case)  
**SFCCPG** (Solid Front Case)

## Features

- Low range with high accuracy
- All SS internals
- Accuracy  $\pm 1\%$  FSD
- Compact design avoids use of bulky manometers
- Ingress protection class IP-68
- These Pressure Gauges are well suited for low pressure measurement.
- The sensing Element Capsule, is made of 2 Stainless Steel Laser-welded Diaphragms.



## Specifications

<b>Ref. standard</b>	EN 837
<b>Dial</b>	100 mm /150 mm, Aluminium, white background, black markings
<b>Case</b>	SS304 / SS316 with bayonet bezel
<b>Protection</b>	IP-68 (IS:13947 part I / IEC:60529)
<b>Window</b>	Safety glass (Shatter proof / Toughened glass)
<b>Pointer</b>	Light weight, balanced, aluminium
<b>Capsule</b>	SS316 / SS316L (made of two diaphragms laser-welded )
<b>Socket</b>	SS316 / SS316L
<b>Movement</b>	SS304 / SS316
<b>Connection</b>	1/2" NPT (M) as standard (other optional )
<b>Range</b>	Refer table
<b>Accuracy</b>	$\pm 1\%$ FSD
<b>Over range</b>	110% FSD Standard, Other on request
<b>Zero reset</b>	Provided
<b>Blow out disc</b>	Provided (on top)
<b>Temperature suitability</b>	Ambient (-) 20°C to 60°C, Media 100°C
<b>Temperature Effect</b>	Within $\pm 0.6\%$ FSD/10°C, when temperature changes from reference temperature of 20°C (as per EN-837 standard)
<b>Optional</b>	NACE Compliance CE

## Ranges

Range in mm WC	
0-60	(-)60-0
0-100	(-)100-0
0-160	(-)160-0
0-250	(-)250-0
0-400	(-)400-0
0-500	(-)500-0
0-600	(-)600-0
0-750	(-)750-0
0-1000	(-)1000-0
0-1600	(-)1600-0
0-2000	(-)2000-0
0-2500	(-)2500-0
0-4000	(-)4000-0
0-6000	(-)6000-0

Special combination for compound ranges available, within the above span

# Compact Capsule Sensing Pr. Gauges

GAUGES BOURDON

F R A N C E

Model : **CCPG** (Normal Case)  
**SFCCPG** (Solid Front Case)

## Ordering Information

### MODEL



**BASIC MODEL CODE**  
**CCPG** Normal Case  
**SFCCPG** Solid Front Case

**MOUNTING**  
**V** Bottom Entry, Local Mounting  
**S** Bottom Entry, Surface Mounting  
**Y** Bottom Entry, 2" Pipe Mounting  
**C** Back Entry, Local Mounting  
**P** Back Entry, Flush Panel Mounting

**DIAL SIZE**  
**100** 100 mm **150** 150 mm

**CASE**  
**S4S** SS 304  
**S6S** SS 316

**CAPSULE**  
**S6S** SS 316  
**S6L** SS 316L

**SOCKET**  
**S6S** SS 316  
**S6L** SS 316L

**MOVEMENT**  
**S4S** SS 304  
**S6S** SS 316

**OPTION**  
**BOB** Blow out disc at back  
**BSN** Built In Snubber  
**CLB** Colour Band  
**CEM** CE marking  
**DUS** Dual Scale  
**EXZ** External Knob for Zero Adjustment  
**NAC** NACE  
**OXY** O2 Cleaning  
**VCP** Vac protection  
**L** Nil  
**ACC** Accessory  
**XXX** Other

**UNIT**  
**KSC** kg/cm2(g)  
**BAR** bar(g)  
**PSI** psi(g)  
**KPA** kPa(g)  
**MPA** MPa(g)  
**MBR** mbar(g)  
**MMW** mm WC(g)  
**CMW** cm WC(g)  
**MWC** m WC(g)  
**INW** inch WC(g)  
**MMH** mm Hg(g)  
**CMH** cm Hg(g)  
**INH** inch Hg(g)  
**XXX** Other (Please specify)

CONNECTION							
Conn	Code	Size	Code	Type	Code	Male/ Female	Code
Thread	T	1/4"	06	NPS	NS	Male	M
		3/8"	10	NPT	NT	Female	F
		1/2"	15	BSP	BP		
		3/4"	20	BSPT	BT		
		1"	25	JIS-PF	PF		
		M20	M20	JIS-PT	PT		
				Gas	GS		
				R	RR		
				Rp	RP		
				Pitch 1.5	C		

**RANGE**  
 Please Select from Table

e.g. For 1/2"NPT(M), Code: **T15NTM**  
 For M20x1.5 (F), Code: **TM20CF**

Sample Model Code: **CCPG-V-150-S4S-S6S-S6S-S4S-T15NTM-(0-1000)-MMW-L**