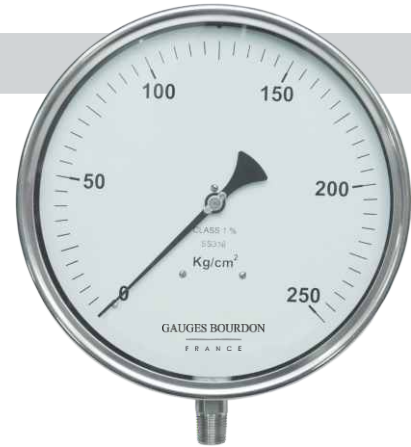


Model : **BS25** (Dry Case) **LFBS25** (Liquid Filled Case)

SFBS25 (Solid Front, Dry Case) **LSBS25** (Liquid filled, Solid Front Case)

Features

- Compliance to latest EN-837 standard
- Range : (-)1 to 1600 kg/cm²
- Bourdon in SS316 Ti as standard providing better mechanical properties guaranteeing repeatability and accuracy
- Accuracy ±1% FSD (Standard), ± 0.5% FSD on request
- Unit of measurement - kg/cm², bar, psi, kPa, MPa



Specifications

Ref. Standard	EN-837
Dial	250 mm in Aluminium, white background, black markings
Case	SS304 / SS316 with bayonet bezel
Protection	IP-68 (IS:13947 part I / IEC:60529)
Window	Safety glass (Shatter proof / Toughened glass)
Bourdon	SS316, SS316 Ti, SS316L, Monel
Socket	22mm Square in SS316, SS316 Ti, SS316L, Monel
Movement	SS304, SS316
Range	As per EN 837 (refer table) minimum span 0.6 kg/cm ² , maximum 1600 kg/cm ²
Connection	1/2" NPT (M) as standard* (other optional)
Accuracy	±1.0% FSD standard (±0.5% FSD on request)
Over range	As per EN 837
Zero adjustment	Micrometer Pointer
Blow out disc	Provided (on top)
Temperature suitability	Ambient (-)20°C to 60°C, Media 200°C
Temperature Effect	Within ±0.4% FSD/10°C, when temperature changes from reference temperature of 20°C (as per EN-837 standard)
Optional	NACE compliance Liquid Filled Case External Knob for zero setting Vacuum Protection CE

* For ranges above 1000 bar, connection shall be 1/2"BSP(M) with Bottom Entry only

Ranges

Gauge	bar, kg/cm ²	Least count	
Vacuum	(-)1 to 0	0.02	
	-760 to 0mmHg	20	
Compound	(-)1 to 0.6	0.05	
	(-)1 to 1.5	0.05	
	(-)1 to 3	0.10	
	(-)1 to 5	0.10	
	(-)1 to 9	0.20	
	(-)1 to 15	0.50	
	(-)1 to 24	0.50	
	(-)1 to 39	1.0	
	Pressure Gauge (‘C’ shaped Bourdon)	0 to 0.6	0.01
		0 to 1	0.02
0 to 1.6		0.05	
0 to 2.5		0.05	
0 to 4		0.10	
0 to 6		0.10	
0 to 10		0.20	
0 to 16		0.50	
0 to 25		0.50	
0 to 40		1.0	
Pressure Gauge Coil type Bourdon	0 to 60	1.0	
	0 to 100	2.0	
	0 to 160	5.0	
	0 to 250	5.0	
	0 to 400	10.0	
	0 to 600	10.0	
	0 to 800	20.0	
	0 to 1000	20.0	
	0 to 1600	50.0	

For range other than above please contact our design dept.

Bourdon Sensing Pr. Gauges - 250mm

GAUGES BOURDON

FRANCE

Model : **BS25** (Dry Case) **LFBS25** (Liquid Filled Case)

SFBS25 (Solid Front, Dry Case) **LSBS25** (Liquid filled, Solid Front Case)

Ordering Information

MODEL



BASIC MODEL CODE

- BS25** Dry Case
- LFBS25** Liquid Filled Case
- SFBS25** Solid Front, Dry Case
- LSBS25** Liquid filled, Solid Front Case

MOUNTING

- V** Bottom Entry, Local Mounting
- S** Bottom Entry, Surface Mounting
- Y** Bottom Entry, 2" Pipe Mounting
- C** Back Entry, Local Mounting
- P** Back Entry, Flush Panel Mounting

DIAL SIZE

250 250 mm

CASE

- S4S** SS 304
- S6S** SS 316

BOURDON

- S6S** SS 316
- S6L** SS 316L
- S6T** SS 316Ti
- MN4** Monel

SOCKET

- S6S** SS 316
- S6L** SS 316L
- S6T** SS 316Ti
- MN4** Monel

MOVEMENT

- S4S** SS 304
- S6S** SS 316

CONNECTION

Conn	Code	Size	Code	Type	Code	Male/ Female	Code
Thread	T	1/4"	06	NPS	NS	Male	M
		3/8"	10	NPT	NT	Female	F
		1/2"	15	BSP	BP		
		3/4"	20	BSPT	BT		
		1"	25	JIS-PF	PF		
		M20	M20	JIS-PT	PT		
				Gas	GS		
				R	RR		
				Rp	RP		
				Pitch 1.5	C		

e.g. For 1/2"NPT(M), Code: **T15NTM**
For M20x1.5 (F), Code: **TM20CF**

OPTION

- A05** Accuracy $\pm 0.5\%$ FSD
- BGS** Built In Gauge Saver
- BOB** Blow out disc at back
- BSN** Built In Snubber
- CLB** Colour Band
- CEM** CE marking
- DC2** Silicone Oil filled Case
- DUS** Dual Scale
- EXZ** External Knob for Zero Adjustment
- FLG** Flanged Process Conn
- GLY** Glycerine filled Case
- NAC** NACE
- OXY** O2 Cleaning
- OR5** 150% FSD Over range
- VCP** Vac protection
- L** Nil
- CSU** Chemical Seal
- ACC** Accessory
- XXX** Other

UNIT

- KSC** kg/cm2(g)
- BAR** bar(g)
- PSI** psi(g)
- KPA** kPa(g)
- MPA** MPa(g)
- MBR** mbar(g)
- MMW** mm WC(g)
- CMW** cm WC(g)
- MWC** m WC(g)
- INW** inch WC(g)
- MMH** mm Hg(g)
- CMH** cm Hg(g)
- INH** inch Hg(g)
- XXX** Other (Please specify)

RANGE

Please select from Table

FLG - FLANGE

Conn	Code	Size	Code	Rating#	Code	Facing	Code
Flange	F	1/2"	15	150	A	RF	RF
		3/4"	20	300	B	FF	FF
		1"	25	600	C	RTJ	RJ
		1-1/2"	40	900	D	LT	LT
		2"	50	1500	E	LG	LG
		3"	80	2500	F		

e.g. For 40 NB 300# RF flange, Model Code: **F40BRF**

Sample Model Code: **BS25-V-250-S4S-S6S-S6S-S4S-T15NTM-(0-10)-KSC-L**